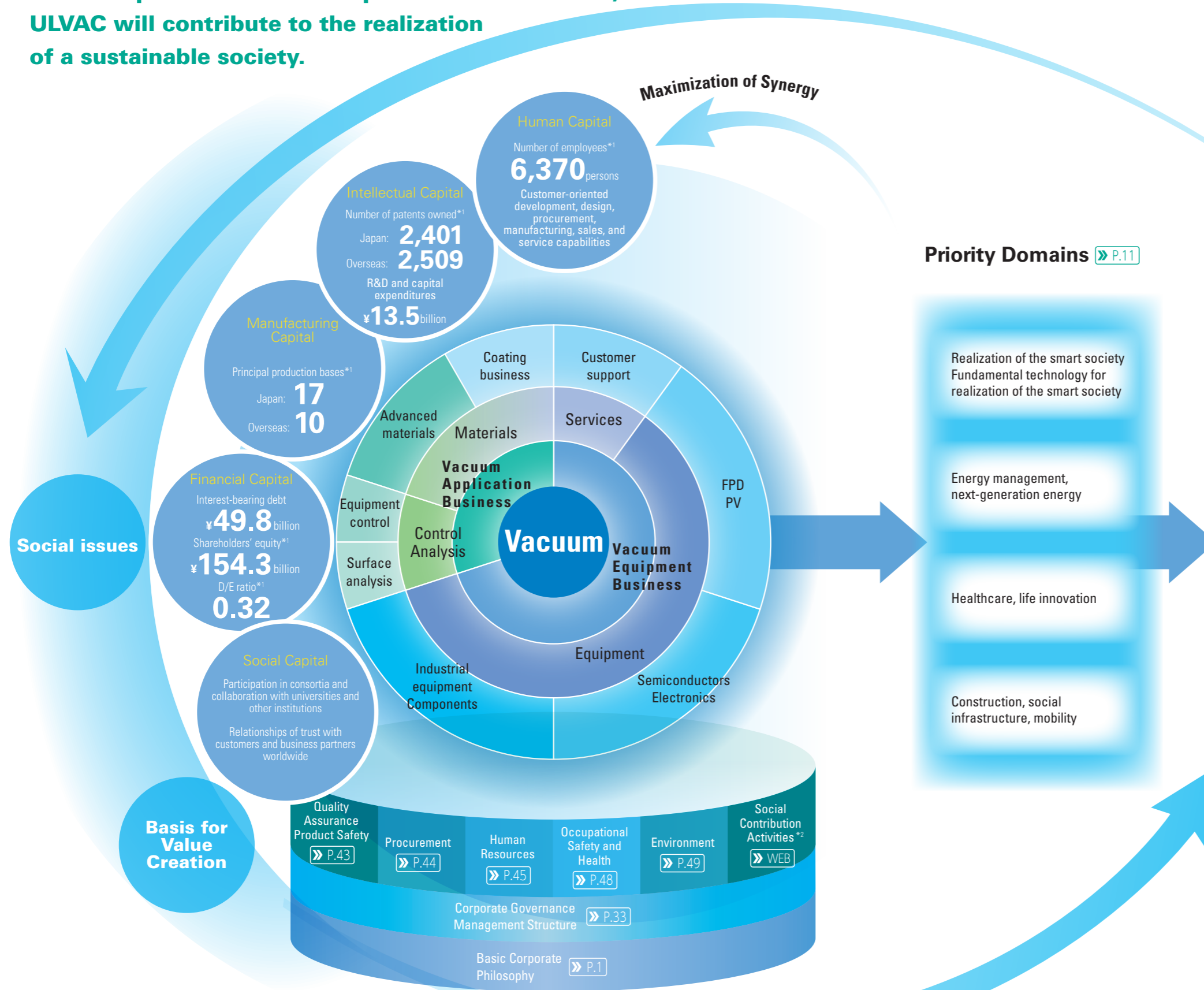


# ULVAC's Value Creation <Process>

As a comprehensive vacuum product manufacturer, ULVAC will contribute to the realization of a sustainable society.



## Value Creation

### Value ULVAC Offers to Stakeholders

#### Customers

Contribution to customers' business activities, technological innovation, and value creation; offering of cutting-edge production technology, enhancement of productivity and quality, and reduction of environmental impacts through equipment and services

#### Shareholders and investors

Enhancement of corporate value, greater returns

#### Suppliers

Achievement of growth together with ULVAC based on trust and collaboration, fair and free competitive environment

#### Local communities

Creation of employment opportunities, industrial development, reduction of environmental impacts

#### Employees

Workplaces offering job satisfaction

### Contribution to realization of a sustainable society\*3

#### Major contributions through products and services



#### Value Offered by ULVAC's Business >> P.13

#### Major contributions through processes

Partnerships for the goals

| ESG                       | ULVAC's major initiatives  | Relevant SDGs | Reference pages   |
|---------------------------|--|---------------|---|
| <b>E</b><br>(Environment) | <ul style="list-style-type: none"> <li>Environmental management</li> <li>Environmentally friendly products</li> <li>Contribution to reduction of power consumption of various devices</li> </ul>   |               | <a href="#">&gt;&gt; P.13</a> <a href="#">&gt;&gt; P.49</a>   |
| <b>S</b><br>(Social)      | <ul style="list-style-type: none"> <li>Quality management</li> <li>CSR procurement</li> <li>Occupational safety and health</li> <li>Social contribution activities</li> </ul>  |               | <a href="#">&gt;&gt; P.43</a> <a href="#">&gt;&gt; P.44</a><br><a href="#">&gt;&gt; P.48</a><br><a href="#">&gt;&gt; WEB</a> *2                             |
| <b>G</b><br>(Governance)  | <ul style="list-style-type: none"> <li>Corporate governance</li> <li>Management structure</li> <li>Compliance</li> <li>Risk management</li> <li>Human resources development</li> <li>Diversity &amp; inclusion</li> <li>Health management</li> <li>Creating motivating workplaces</li> </ul> |               | <a href="#">&gt;&gt; P.33</a> <a href="#">&gt;&gt; P.37</a><br><a href="#">&gt;&gt; P.40</a> <a href="#">&gt;&gt; P.42</a><br><a href="#">&gt;&gt; P.45</a> |

\*3 Indicates relationships with the United Nations' Sustainable Development Goals (SDGs).

\*1 As of June 30, 2020    \*2 For details >> Website>>Sustainability>Social Contribution Activities