

OIL MIST TRAP

INSTRUCTION MANUAL

OMT-050A

Before Use

For safe and efficient operation, be sure to go through this manual before attempting to use this pump.

After reading the manual, keep it in your file for future reference.

Specifications given in this manual are subject to change without notice due to improvement.

ULVAC KIKO, Inc

1.INTRODUCTION

This oil mist trap is specially designed to trap oil mist that is entertained with exhaust air during the operation of oil sealed rotary vacuum pump. It also has a function of returning trapped oil to the vacuum pump from which oil mist is exhausted. Because of those faculties, oil consumption rate of operating vacuum pump is remarkably reduced.

2.SPECIFICATIONS

Table.1 Specification

| | |
|-------------------------|---------------------------------------|
| Available flow capacity | Max. 60 L/min |
| Weight | 105 g |
| Dimension | 65 (DIA) × 93 (H) mm |
| Installation | Vertical direction |
| Life of element | Every, 1,500 to 2,000 Hr of operation |
| Connector | G 3/4 |

3.UNPACKING

Please confirm the following checkpoint.

- 1) Appearance.
- 2) Fixation of every screw.

If you find any defect. Please contact our dealer or branch.

4.INSTALLATION

Table.2 OMT-050A fits our vacuum pump.

| Pumping speed(L/min) | 5~10 | 20~30 | 40~50 |
|----------------------------------|-----------------|--|---|
| OMT-050A Fits our vacuum pump | G-5DA G-10DA | G-20DA, G-25SA GHD-031A GHD-031B | G-50DA, G-50SA GLD-040 GLD-051 GLS-051 |

Remove standard discharge port and screw up OMT-050A.

5.CAUTION

- 1) When operation pressure is blow 40Pa the trapped oil returnees to pump automatically.
- 2) When operating pressure is higher than 40Pa periodically shut down about 5minutes or high vacuum {below 40Pa} operation is required.

6.MAINTENANCE

- 1) Element of OMT-050A is subject to exchange every 1,500 to 2,000 hour of operation due to filling up of the element by dust.
- 2) Whole gasket also should be exchanged at the same time. These parts are available at our dealer or our branch.

7.DIMENSIONAL DRAWING

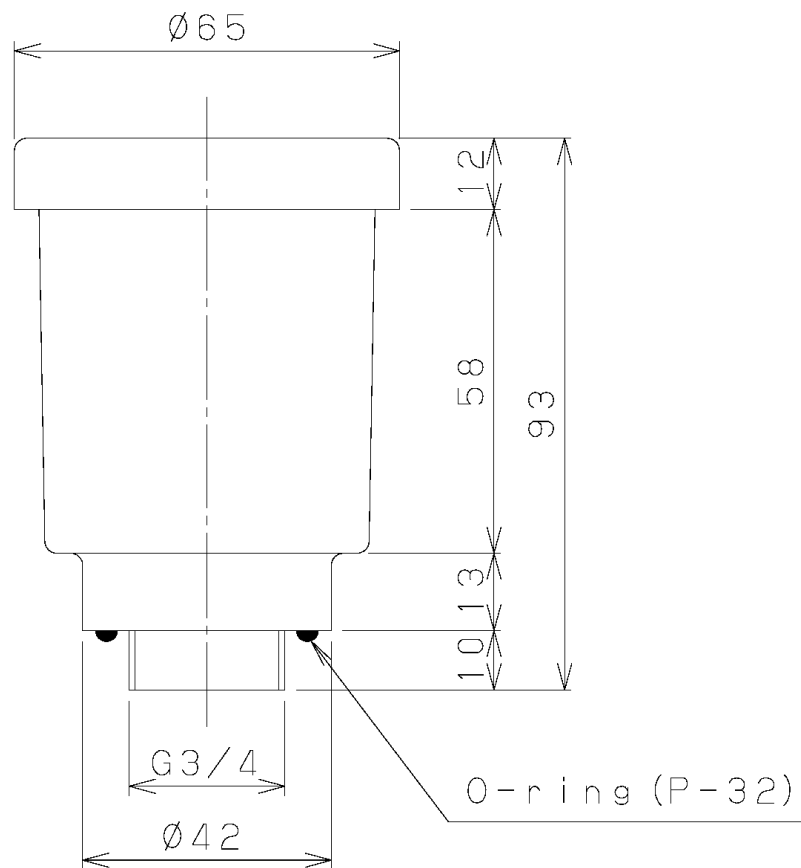


Fig. 1 General Assembly Drawing of OMT-050A

8.ELEMENT AND GASKET FOR EXCHANGE PROCEDURE

The number in a circle indicates parts of DISASSEMBLY DRAWING (Fig. 2).

- 1) Before exchanging Element and Gasket, remove OMT from the pump.
- 2) See Fig. 2 and table. 3.
- 3) Turn Screw ⑮ counter clockwise with a driver.
- 4) Remove Screw and then remove Seal washer ⑫.
- 5) Remove Top cover ①.
- 6) Remove Element ⑪ and then remove Element stopper ③, Gasket ⑬ from Case ②.
- 7) After exchange Gasket for new one, fix it.
- 8) Put Element stopper on Gasket.
- 9) After exchanging Element for new one, put Element on Element stopper.
- 10) Put Top cover on Element.
- 11) After put Screw into Seal washer, fix Case.
- 12) Put Screw into the Case.
- 13) Do not take it apart except the parts mentioned above.

9.CUSTODY

Put it in a bag (such as a plastic bag). Keep it away from the dust and the direct sunshine.

10.DISASSEMBLY DRAWING

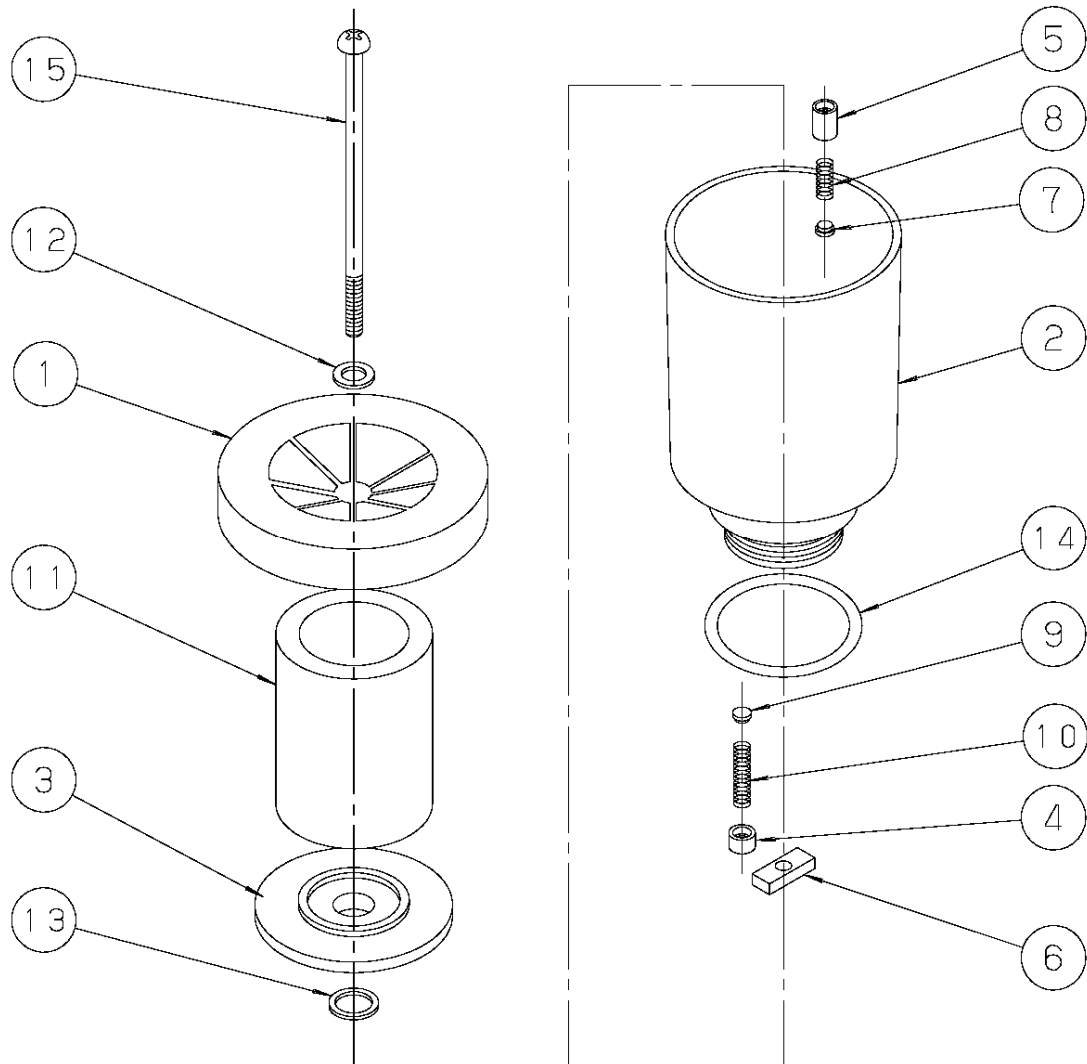


Fig. 2 Disassembly Drawing of OMT-050A

11.PARTS LIST

Table.3 Parts List

| No. | DESCRIPTION | Q'ty | REMARKS | No. | DESCRIPTION | Q'ty | REMARKS |
|-----|------------------------|------|---------|-----|-------------|------|---------|
| 1 | Top cover | 1 | | 9 | Check valve | 1 | |
| 2 | Case | 1 | | 10 | Spring B | 1 | |
| 3 | Element stopper | 1 | | 11 | Element | 1 | |
| 4 | Check valve stopper | 1 | | 12 | Seal washer | 1 | |
| 5 | Pressure valve stopper | 1 | | 13 | Gasket | 1 | |
| 6 | Screw stopper | 1 | | 14 | O-ring | 1 | P-32 |
| 7 | Pressure valve | 1 | | 15 | Screw | 1 | |
| 8 | Spring A | 1 | | - | - | - | - |

12.CONCLUSION

This manual contains only general information about pump operation. Therefore, if you come up with any question or trouble, contact your local ULVAC KIKO representative or ULVAC KIKO.

WARRANTY

- (1) The warranty period of this oil mist trap is one year from shipment.
- (2) Any malfunctions or defects which occur under normal usage conditions during the warranty period will be repaired free of charge. Note, the warranty stated here is an individual warranty covering the oil mist trap. In addition, the scope of the warranty coverage concerning repairs is limited to the repair and/or replacement of parts.
Normal usage conditions refer to the following:
 - a) Ambient temperature and humidity during operation: 7 - 40°C, below 85% RH
 - b) Type and temperature of exhaust gas from vacuum pump: Dry air or dry nitrogen, 7°C to 40°C
 - c) Operation in accordance with the user manual
- (3) Repair fees will incur during the warranty period for the following cases:
 - a) Malfunctions due to a natural disaster or fire.
 - b) Malfunctions caused by special atmospheric conditions, such as salt damage, inflammable.
 - c) Malfunctions caused by usage conditions that differ from those stated in the user manual. (performance specifications, maintenance and inspection, etc.).
 - d) Malfunctions caused by modifications or repairs carried out by a party other than the manufacturer, or by a service company not approved by the manufacturer.
 - h) Malfunctions that occur, when the oil mist trap is damaged as a result of being dropped or falling, etc.
 - i) Malfunctions which are determined by the manufacturer's technical personnel to be caused by conditions that do not comply with the usage conditions for this vacuum pump.
 - j) Malfunctions due to the replacement of consumables.
- (4) Disclaimer
 - a) We shall not be liable for any malfunctions of our products caused by the customer, regardless if the malfunction does not fall within the warranty period, nor shall we be liable for any loss of opportunity for the customer's clients or for compensation for any damages to other products, labor costs, production loss, transportation expenses and other related work.
 - b) We shall not be liable for any claims and patent infringements, including secondary damages, filed a claim by a third party against the customer.

< ULVAC KIKO,Inc. >

Head office

291-7 Chausubaru Saito-city,Miyazaki 881-0037 Japan

Tel:+81-983-42-1411 Fax:+81-983-42-1422

Sales division

1-10-4 Kitashinyokohama Kohoku-ku Yokohama-city,Kanagawa 223-0059 Japan

Tel: +81-45-533-0206 Fax: +81-45-533-0204