

**Instruction Manual**

**for**

**Direct-Drive Oil Sealed Rotary Vacuum Pump**

**Model**

**G-5DA,G-10DA**

Before using the product, be sure to read this manual.  
Keep this manual in a place where it can be referred to  
at any time and look after it carefully.  
The contents of this instruction manual are subject to  
change without prior notice due to improvements in  
performance and the functions of the product.

**ULVAC KIKO,Inc.**

## 0. Preface

### 0.1 Before using this pump

We, ULVAC KIKO, Inc. thank you for purchasing our vacuum pump. When receiving our vacuum pump, please confirm the product is the same Model No. as you ordered. Also, check to make sure there are no damages.



#### CAUTION

To ensure a long life for this pump, read this manual carefully prior to installation, operation, and maintenance. Also, pay attention to ascertain the details of safety, specification, and operational precautions of this pump.



#### NOTE

Copyright by ULVAC KIKO, Inc. All right reserved. All material in this manual shall not be copied without permission by ULVAC KIKO , Inc. Printed in JAPAN.

## 0.2 Safety precautions (General expression)

Safety precautions are identified in this manual using headers DANGER, WARNING, CAUTION, and NOTE.



### **DANGER**

"Danger" Indicates major hazardous situations, which present an immediate threat of death or serious injury.



### **WARNING**

"Warning" Indicates hazardous situations, which may present a potential to death or serious injury.



### **CAUTION**

"Caution" Indicates hazardous situations where a potential hazard or unsafe practice could cause personal injury or equipment damage.



### **NOTE**

"Note" Indicates undesirable situations where a potential hazard could cause equipment damage or abnormal operation.

### 0.3 Safety precautions



#### **DANGER**

When evacuating toxic or inflammable gas, there may be danger of leaking gas from parts besides inlet port. Practice cautionary steps when working any kind of gases.



#### **DANGER**

After evacuating toxic gases, the inside of pump and pump oil is contaminated and toxic. Therefore, handle pump with care during maintenance.



#### **WARNING**

Do not overhaul or repair this pump. Only authorized maintenance personnel should handle this pump to avoid ignition, abnormal action, and electric shock.



#### **WARNING**

Switch off power before checking or repairing the pump to avoid any problems (electric shock or personal injury) caused by suddenly starting up.



#### **WARNING**

Connect an electrical wire cord to ground potential terminal tightly to avoid electric shock caused by mechanical trouble or electrical leakage.



#### **WARNING**

Do not plug exhaust port or place any materials inside of exhaust port, because it will reduce pumping speed during operation. Pump explosion, oil level gauge bursting, or motor over loading are consequences of excessive pressure inside the pump. This pump is not a compressor. The maximum pressure inside this pump is 0.03 MPa (GAUGE).

**WARNING**

Do not use this pump in an explosive or flammable atmosphere. It may cause personal injuries or fires.

**CAUTION**

Do not insert objects, fingers, or another pump body parts into the inlet port. It may cause electric shock, personal injuries, or fires.

**CAUTION**

Do not touch the motor body, shaft, or shaft coupling joint during operation. It may cause personal injuries.

**CAUTION**

Do not place flammable objects around the pump. It may cause fires. Also, do not place obstacles around the pump so as to obstruct cooling air. Abnormal temperature rising may cause burns or fires.

**CAUTION**

Do not touch the motor while the pump is in operation or when the pump is still hot immediately after it stops. Touching it will result in burns.

**CAUTION**

Electric wiring should be carried out in accordance with Electric Regulation and Instructions. Miswriting may cause fires.

**CAUTION**

Switch off electric power right away in case of a malfunction to prevent any troubles. In the case of a malfunction, contact your local agent or ULVAC KIKO, Inc. Sales and Service Center immediately.

**NOTE**

Do not start the pump without pump-oil. Failing to do so will lead to pump destruction.

## 0.4 Acceptance and store of product

### 0.4.1 Acceptance of product

We delivered the pump with the utmost care. After unpacking, please check up and confirm items as shown below,

- (1) The pump is what you ordered.
- (2) Spare parts (single use of pump oil, optional parts)
- (3) Any damages during transportation.
- (4) Any loose screws and nuts.

If you find any abnormal circumstances, please contact your local ULVAC KIKO, Inc. Sales or Service Center.

### 0.4.2 Store of product, Installation, Operating condition

This pump is a type of precision equipment; therefore, it is necessary to satisfy the following items for store product.

- (1) Operational temperature and humidity : 7~40° C , 85 % RH >
- (2) Installation place should be at an altitude no higher than 1000m above sea levels for storing or operation.
- (3) Required conditions while storing or operating
  - a. Do not use corrosive or explosive gases.
  - b. No areas with high moisture.
  - c. No areas with dust particles.
  - d. Use indoors only.
  - e. Do not pile up, or lay on its side.
  - f. Keep out of direct sun light.
  - g. Keep away from heat source.



#### NOTE

Do not treat with force, or lay on its side. It may cause damage.

## 0.5 Protective precautions

- 100 volt , single phase, 50/60 Hz motor is used for this pump.
- A built-in type thermal protector is equipped for the motor.
- Additional (leakage, etc) protectors are recommended.



### NOTE

Do not apply any voltages other than specifically rated for the motor of this pump. The over-load protector does not operate normally, consequently it may cause burning the motor or firing.

# CONTENTS

0. Preface	1
0.1 Before using this pump	1
0.2 Safety precautions (General expression)	2
0.3 Safety precautions	3
0.4 Acceptance and store of product	5
0.4.1 Acceptance of product	5
0.4.2 Store of product, Installation, Operating condition	5
0.5 Protective precautions	6
1. For safety operation	10
1.1 Hazardous of product and safety precautions	10
1.1.1 DANGER     Leakage of hazardous gases and materials	10
1.1.2 WARNING    Electric shock	10
1.1.3 WARNING    Warning explosion	11
1.1.4 CAUTION    High temperature	11
1.2 Safety data sheet (SDS)	12
2. General description of the pump	13
2.1 Principal features	13
2.2 Dimensional drawings	14
3. Setting up	15
3.1 Installation	15
3.2 Oil charging	15
3.3 Vacuum tubing	17
3.4 Electric wiring	17
3.5 Fluctuations in the power voltage and frequency	18

4. Operational instructions	• • • • • • • 20
4.1 Operational precautions	• • • • • • • 20
4.2 Start up operation	• • • • • • • 21
4.3 Shut down operation	• • • • • • • 22
4.4 Start up procedures in cold climate	• • • • • • • 22
4.5 Thermel protector	• • • • • • • 23
4.6 Setup oil mist trap (option)	• • • • • • • 23
4.7 The restriction in an operation of oil mist trap (option)	• • • • • • • 24
5. Specification	• • • • • • • 25
5.1 Ultimate pressure	• • • • • • • 25
5.2 Pumping speed	• • • • • • • 25
5.3 Required electricity	• • • • • • • 25
6. Maintenance, inspection, repair	• • • • • • • 27
6.1 Maintenance	• • • • • • • 27
6.2 Scheduled inspection	• • • • • • • 27
6.3 Oil change	• • • • • • • 29
6.4 Replacement of the coupling	• • • • • • • 31
6.5 Trouble shooting list	• • • • • • • 32
7. Product disposal	• • • • • • • 34
8. Maintenance parts	• • • • • • • 35
8.1 Maintenance parts list	• • • • • • • 35
8.2 Disassembly drawing	• • • • • • • 36
Warranty	
Safety Data Sheet(SDS)	
Check sheet for repair	
Sales and Service Centers	

## DRAWING AND TABLE LIST

Fig-1 General assembly drawing of G-5DA	• • • • • 14
Fig-2 General assembly drawing of G-10DA	• • • • • 14
Fig-3 Oil charge to rotary vacuum pump	• • • • • 16
Fig-4 Vacuum pumping system diagram	• • • • • 17
Fig-5 Change region of the voltage and frequency	• • • • • 18
Fig-6 Characteristics of vacuum pumping speed	• • • • • 26
Fig-7 Characteristics of motor power	• • • • • 26
Fig-8 Replacement of the coupling	• • • • • 31
Fig-9 Disassembly drawing of G-5DA	• • • • • 36
Fig-10 Disassembly drawing of G-10DA	• • • • • 37
Table-1 Specification	• • • • • 13
Table-2 Characteristics of the thermal protector	• • • • • 23
Table-3 Scheduled inspection	• • • • • 28
Table-4 Trouble shooting list	• • • • • 32
Table-5 G-5DA Maintenance parts list	• • • • • 35
Table-6 G-10DA Maintenance parts list	• • • • • 35

## 1. For safety operation

### 1.1 Hazardous of product and safety precautions

Before operating or inspecting the pump, read this manual carefully. And pay attention to ascertain the detail of potential hazardous and preventive procedure so that must be operated or inspected the pump.

#### 1.1.1 **DANGER** Leakage of hazardous gases and materials

Cause	Preventive Procedure
Leakage of toxic or inflammable gases.	⇒ Before evacuating gases to the pump inlet, dilute them to safety level.
Injuries of skin by direct contact with contaminated oils or adhered hazardous materials of the pump body when checking or disposing dispose the pump.	⇒ ① After wearing suitable protector for evacuating hazardous materials, check or abolish the pump. ② Before checking or disposing the pump, non-hazardous treatment must be requested for the authorized professional specialist, then check or the pump. ③ Disposal must be requested for the professional specialist authorized by the administration.

#### 1.1.2 **WARNING** Electric shock

Cause	Preventive Procedure
Electric shock by touching electrical bare portion of the motor when electric power is on.	⇒ ① Switch off power certainly before electric wiring Connect electrical wire cords to ground potential terminals tightly. ② Switch off power before inspection or removing. ③ Do not insert objects, fingers, or any thin bars into the inlet port.

1.1.3  **WARNING** Warning explosion

Cause	Preventive Procedure
Pump explosion is consequence of excessive pressure inside the pump.	<p>⇒ The maximum pressure inside the pump is 0.03 MPa (GAUGE).</p> <p>If inlet pressure of the pump is higher than 0.03 MPa (GAUGE), eliminate any objects which may cause obstruct gas flowing to the inlet port.</p> <p>When using oil mist trap, exchange or clean them to avoid gas flowing.</p>

1.1.4  **CAUTION** High temperature

Cause	Preventive Procedure
Burn at high temperature.	<p>⇒ ① Temperature of the pump is high as shown below</p> <p style="padding-left: 100px;">pump body → 70 ~ 80°C</p> <p style="padding-left: 100px;">motor → 70 ~ 80°C</p> <p>② High temperature surface of the pump may cause to burn as a result of direct skin contact by accident. Do not touch the pump body during operation. Inspection should be carried out after stopping and cooling down the pump.</p>

## 1.2 Safety data sheet (SDS)

The chemical material, which is applied or possible to contact when operating this pump are described. Read this manual carefully to understand characteristics of the chemical material (vacuum pump oil), which is described on SDS sheet. When applying other vacuum pump oils besides the description in this manual, contact your local ULVAC KIKO, Inc. Sales and Service Center.



### **CAUTION**

SDS presents the reference information of hazardous chemical material to keep safety precautions. When handling the pump oil, it is necessary to take proper and practical treatments, which are adapted handling the oil. After understanding the above mention, these treatments must be done. Therefore, SDS is a not safety warranty.

## 2. General description of the pump

### 2.1 Principal features

This oil rotary vacuum pump is a sliding vane type (so called Gaede type), with direct driven motor. As it is a small sized, lightweight, and simple structure, it is easy to maintain or over-haul.

**Table-1 Specification**

Model	Unit		G-5DA	G-10DA
Type			Sliding vane 2 stages	
Pumping speed	L/min	50Hz	5	10
		60Hz	6	12
Ultimate pressure	Pa		6.7	1.3
Motor (W), Poles			40 (4)	60 (4)
Volts	V		100	100
Full load current	A	50Hz	0.92	1.38
		60Hz	0.73	1.22
Motor revolution	r/min	50Hz	1,250	1,250
		60Hz	1,550	1,565
Pump oil	Recommended		SMR-100	
	Capacity, (mL)		180	250

Note 1. Ultimate pressure indication by Pirani gauge.

2. Vapor pressure, viscosity, or characteristics of vacuum pump oils are different respectively. Our recommended oil is SMR-100.

## 2.2 Dimensional drawings

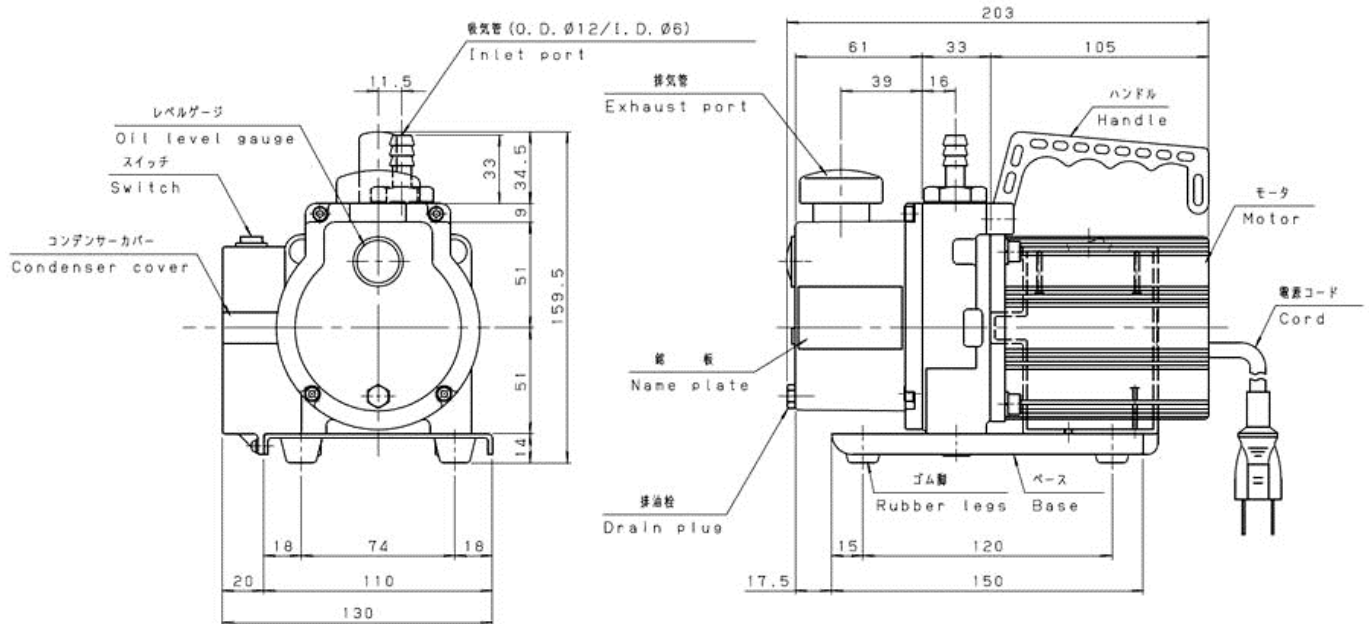


Fig-1 General assembly drawing of G-5DA

Motor ; Single phase, 100V, 40W, 4Poles, capacitor run

Weight ; 5.0kg(with motor)

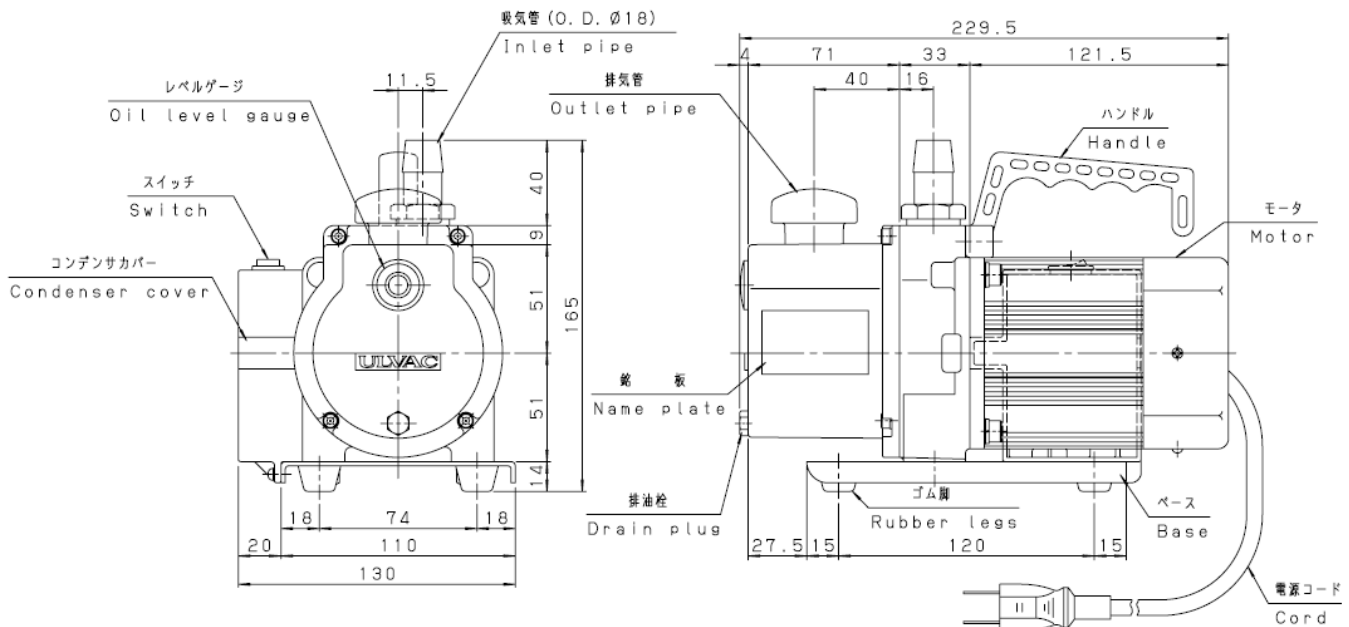


Fig-2 General assembly drawing of G-10DA

Motor ; Single phase, 100V, 60W, 4Poles, capacitor run

Weight ; 5.5kg(with motor)

## 3. Setting up

### 3.1 Installation

Installation must be done at a place of low moisture, low dust particle, and also level. The layout arrangement should be considered for setting up, overhaul, checking, or cleaning the pump. When setting up the pump in any systems, pay attention to temperature in atmosphere. Mount rubber isolator to absorb vibration from the pump. On the environmental condition, refer to 「0.4.2 Store of product」.



#### **CAUTION**

Do not tilt, lay its side, or operate up side down. It may cause damage.  
The pump must be placed on a level place in an upright position as shown in Fig-1, Fig-2.

### 3.2 Oil charging

Remove the Exhaust port, and then fill the oil (one time charge) to the pump or recommended oil (SMR-100) up to specified quantity through the Exhaust port. In first oil charging, pour the oil up to maximum scale of oil gauge. Then, attach the exhaust port. (Refer to Fig-3) Oil quantity must be checked or adjusted to keep the oil quantity is always in the range of oil gauge during operating the pump.

Improper oil quantity may cause the performance deterioration of the pump, and also may cause damage. When oil quantity is out of gauge scale ultimate pressure become higher, and it may cause bubbling sound like "poko poko".

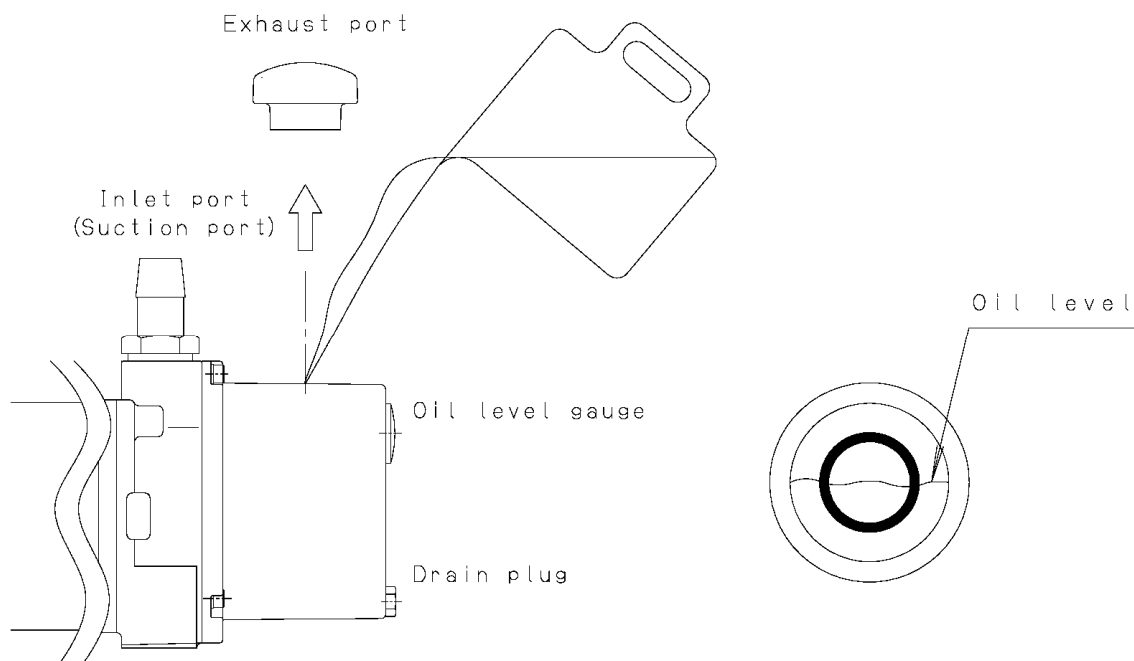


Fig-3 Oil charge to rotary vacuum pump



### CAUTION

- Wear protective rubber gloves or goggles.
- Before charging oils ,read the 「1.2 Safety Data Sheet」 . When the contaminated oil touching the skin or coming into the eye accidentally, follow the item first-aid-treatment of 「1.2 Safety Data Sheet」 .



### NOTE

Do not apply other vacuum pump oils besides our recommended. If applying other vacuum pump oils, it may cause the performance deterioration or shortening the lifetime of the pump.

### 3.3 Vacuum tubing

- (1) Clean inner surfaces of vacuum vessel, tubing and valve. Then, after eliminating water moisture, small particle, dust or rust carefully, connect tube to the pump.



#### NOTE

If evacuating small size powder or dust particle, vacuum pump may cause trouble.

- (2) Install the shut off valve (A) and the pump vent valve (B) in between the pump inlet port and the vessel as shown in Fig-4.

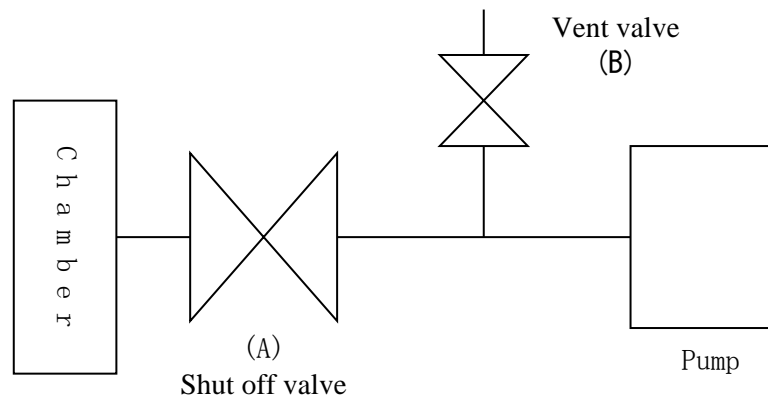


Fig-4 Vacuum pumping system diagram

- (3) Vacuum tubing between inlet port and another port is provided with vacuum rubber hose.



#### NOTE

Do not eliminate mesh-filter for preventing different objects come into the inlet port of the pump.

### 3.4 Electric wiring

- (1) This pump has performed beforehand electric wiring by the side of a pump.
- (2) Plug the power wire cord in the power outlet of 100V, single phase.
- (3) The over-load protector (thermal protector, Automatic reset type) is provided for this pump.

### 3.5 Fluctuations in the power voltage and frequency

Standard: Rotation electricity machine general rules

JIS C 4034-1:1999, JEC-2137-2000

To the voltage change and frequency change in Domain A, in main rated values, it operates continuously, and can be used practically convenient, and to the voltage change and frequency change in Domain B, it shall operate with main rated values and shall be used practically convenient.

However, operation with "it is convenient and safe is maintained on "practical use, it means not resulting in the grade which shortens a life remarkably, and the characteristic, a temperature rise, etc. do not apply correspondingly in the state of rating. Moreover, main rating shows rated torque (N·m).

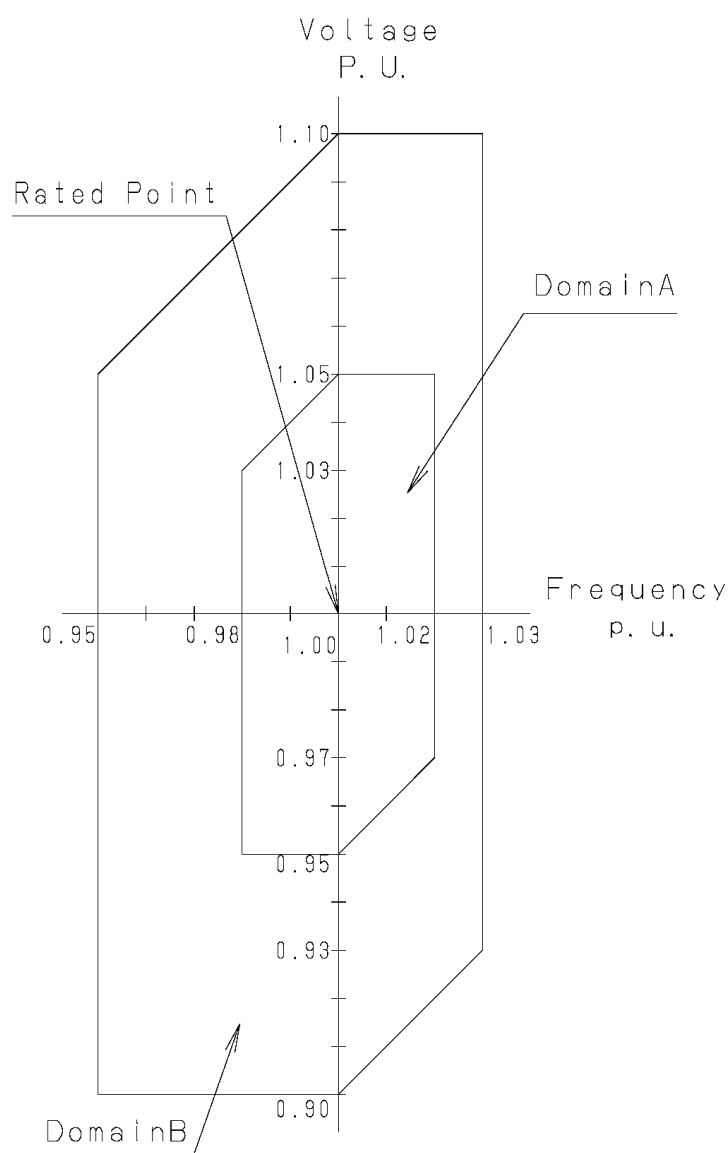


Fig-5 Change region of the voltage and frequency

**WARNING**

Switch off power before electric wiring. Never connect electric wire cord when power line is hot. This may cause electric shock.

**NOTE**

Perform electric wiring correctly in accordance with the “Electric Equipment Technical Standard” and “Internal Wiring Regulation.”  
Incorrect wiring will result in fire.

**NOTE**

Electric wiring should be carried out in accordance with Electric Regulation and Standard. Miss wiring may cause fire.

## 4. Operating instructions

### 4.1 Operating precautions



#### WARNING

Explosion hazard. Do not plug the exhaust port or place any materials inside of the exhaust port, because it will reduce pumping speed during operation. Pump explosion, oil level gauge bursting, or over loading of the motor are consequences of excessive pressure inside the pump. This pump is not a compressor.

The maximum pressure inside this pump is 0.03 MPa (GAUGE).



#### NOTE

- In manufacturing process of semi-conductor, pump oil will be contaminated in a very short term. First oil changing should be done within 10 days. Then, after checking oil contamination, it should be recommended to decide the interval for changing oil.
- When evacuating much quantity of water moisture, change oil frequently. If operating pump a long term as taking water moisture into the pump, this may cause deterioration of oil lubricity, corrosive acceleration of parts inside the pump, also trouble of the pump.
- When evacuating chemicals (acid or like), change the pump oil after stopping the pump immediately to prevent operational impossibility owing to rusting while stopping it for one night.
- When evacuating solvents, change the pump oil after stopping the pump to prevent deterioration of oil lubricity and trouble cause (sticking, etc).
- Continuous running at suction presser higher than 1000Pa may cause high consumable rates of pump oil and oil shortage. And too oil shortage may also cause parts consumption and sticking, therefore supply pump oil without fail.

## 4.2 Start up operation

Close the pump vent valve (B); open the shut-off valve (A) to inlet port of the pump, then turn on the power switch to start operation. The pump begins running.



### CAUTION

- Firing hazard. Do not touch the motor or the pump body as these surface temperature should be higher (70~80°C).
- Operating the pump at high-pressure region must be generated oil mist from exhaust port. Attach the oil mist trap or connect the duct to exhaust oil mist



### NOTE

If the pump rotation is not so smooth, take action needed as described below.

- Check oil quantity, and charge proper quantitative oil.
- When stopping the pump for long term (3days or more) at low temperature, pump oil will come into the pump cylinder. (At end of former operation, vented air into the pump may also cause same situation) If restarting the pump at this condition, over load protector may be operated. Then, carry out several start-stop operations in a short time cycle.



### NOTE

After operating the pump for several hours, oil temperature inside the pump may be risen up to 70 ~80°C. If the temperature is over this, the pump may have troubles. Maintain the pump, or contact ULVAC KIKO, Inc.

### 4.3 Shut down operation

Close shut off valve (A), open pump vent valve (B), then turn off power switch of the pump. If stopping the pump by no opening pump vent valve, the oil will be filled inside the pump cylinder within several minutes. This may cause back flowing oil to the vacuum vessel. For next operation, restarting the pump will be difficult because of not so smooth rotation, thermal protector operating, motor firing by over loading.

When stopping the pump operation by electric stoppage, close shut off valve (A) quickly and then open pump vent valve (B).



#### CAUTION

Firing hazard. As the surface of the pump body is higher temperature (70 ~80°C) during operation, do not touch it until cooled down after stopping the pump.



#### NOTE

- To stop the pump, always close vacuum valve (A) and then open leak valve (B). If this procedure is neglected, the pump oil fills the cylinder, making restart difficult or causing damage to the pump. The pump oil also may flow back to the vacuum chamber side.
- If vacuum valve (A) is not closed, air may leak into the device side through the pump increasing the pressure.

### 4.4 Start up procedures in cold climate

In winter-season, when operating the pump in cold environment or outdoor especially, it will be difficult to start up the pump. It is called over-load operation because of high viscosity of the pump oil at low temperature.

Warm up the pump oil, or repeatedly turn on and turn off the pump (several times on-off operation) until motor starts rotation.

In the case of the pump stoppage after several second operating, continuous operating will be possible by opening the pump vent valve. After warming up the pump, close the pump vent valve, and operate normally.

#### 4.5 Thermal protector

A automatic reset thermal protector is incorporated in the motor in order to interrupt the power circuit of the motor and prevent damage to the motor when an over current flows through the motor due to a stop in rotation or overload resulting from the pump malfunctioning during operation.

Table-2 Characteristics of the thermal protector

Model	G-5DA	G-10DA
Operating temperature	120°C±5°C	120°C±5°C
reset temperature	77°C±15°C	77°C±15°C

When the thermal protector has been actuated, turn off the switch and contact us.

The motor is very hot when the thermal protector has actuated. Never touch it with your hand.

When the cause of the malfunction has been eliminated, check that the motor has cooled down, turn on the switch to restart operation (see 「6.5 Trouble shooting list」).



#### Caution

Firing hazard. As the surface of the pump body is higher temperature (70~80°C) during operation, do not touch it until cooled down after stopping the pump.

#### 4.6 Set up oil mist trap (option)

Oil mist trap OMT-050A for G-5DA, G-10DA can be equipped for trapping oil mist out of the pump. After eliminating the standard exhaust port, equip the oil mist trap to the exhaust port. This can reduce oil mists and exhausting noise. Read the instruction manual of the oil mist trap in detail.

#### 4.7 The restriction in an operation of oil mist trap (option)

When using oil mist trap OMT-050A the following items should be restricted in an operation.

- ① When the filter clogged with oil, change the filter.
- ② The maximum pressure inside this pump is 0.03MPa (GAUGE).
- ③ For pressure reading excess 0.03MPa (Gauge) in exhaust port, change the filter.



#### **WARNING**

Explosion hazard. Keep the operational restriction in setting the oil mist trap. When the filter clogged with oil, change the filter.

## 5. Specification

### 5.1 Ultimate pressure

The 「Ultimate Pressure」 described in the catalog or this manual means obtainable minimum pressure by vacuum pumping at inlet port without conducting gas (no load operating). Our ULVAC KIKO, Inc. applies the specified pump oil and measures the pressure at inlet port attached the sensor of only the PIRANI gauge. In actual vacuum system, the ultimate pressure reading will be higher than the catalog description. This reason will be shown as follows.

- ① When the vacuum sensing head location is far from the pump, any water vapor or gas, generated from any water droplet or any rust adhered to the inside surface of the vacuum vessel or the vacuum tubing may cause high ultimate pressure.
- ② Any volatile contents dissolved into the pump oil will vaporize and it may cause higher ultimate pressure.
- ③ If there is any leakage or gas source in the vacuum tubing, the ultimate pressure will be high.

### 5.2 Pumping speed

Pumping speed of the oil rotary pump must be changed with sort of gases. Generally, pumping speed will be max in high-pressure range, and will be proportional to vacuum pressure reduction. The standard pumping speed of this pump shows the maximum speed when pumping dry air. Inlet pressure Vs pumping speed is shown in Fig-6.

### 5.3 Required electricity

Driving power for motor is totaled mechanical work based on rotor friction and air compression work. It will be maximum at  $4 \times 10^4 \sim 2.7 \times 10^4$  Pa. At lower pressure than 13.3Pa, compression work is small and almost power will be mechanical work consumption. Fig-7 shows minimum power required operating the pump.

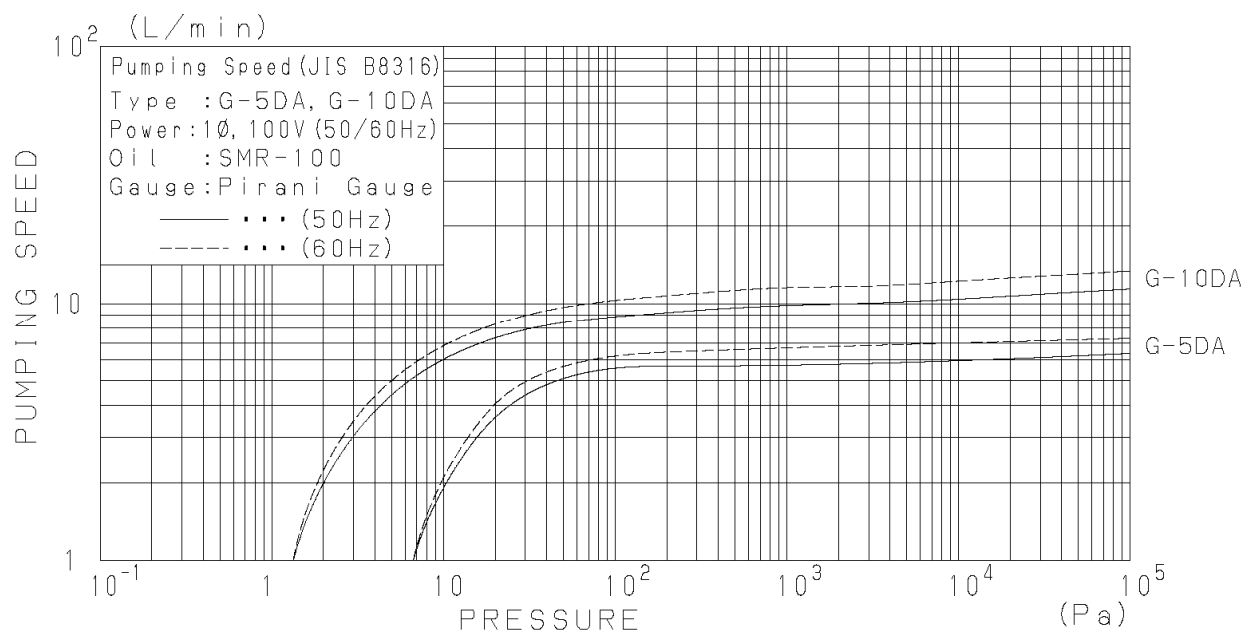


Fig-6 Characteristics of vacuum pumping speed

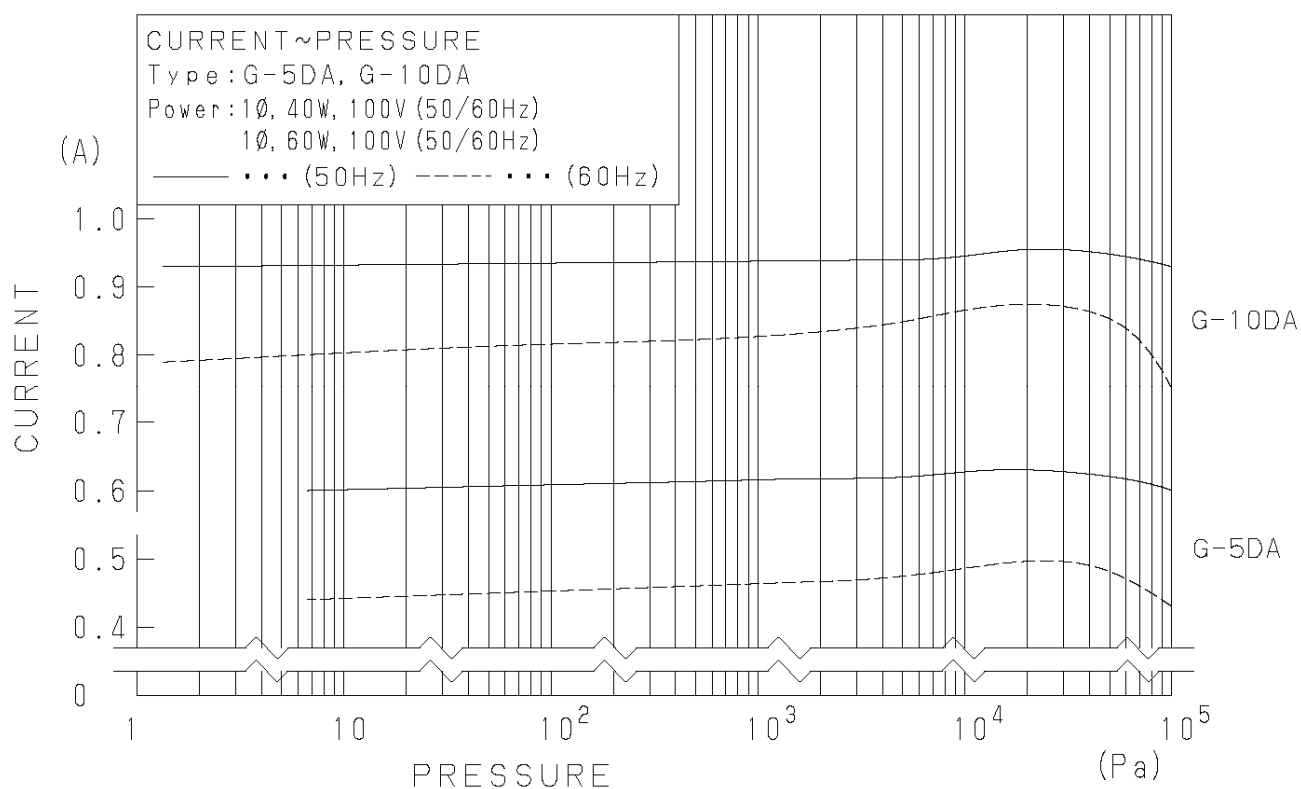


Fig-7 Characteristics of motor power

## 6. Maintenance, inspection, repair

### 6.1 Maintenance

Check and confirm the following items at least every 3 days while operating.

- (1) Oil level is in red ring marking of oil gauge.
- (2) Change in color of the oil.
- (3) Usual sound or not?
- (4) Motor current, normal or not?
- (5) Oil leak from oil seal assembly.

If detecting any problems, take an action needed by 「6.5 Trouble shooting list」.

### 6.2 Scheduled inspection

The inspection items should be changed for operational conditions of the pump. Inspecting the following items will be effective to avoid any troubles or to extend the pump life.



#### **CAUTION**

- Turn off power switch certainly before inspection. Never turn on power switch for inspection. It may cause personal injuries.
- Directly after stopping the pump, the pump body is high temperature. Wait until it will be cooled down, and inspect it. Burning hazard.

#### (1) Periodical changing the pump oil

Pump oil should be deteriorated with operating time. After checking the oil contamination and viscosity, change the oil quickly. Periodical changing the pump oil can suppress the performance deterioration, also elongate the pump life.

If continuing the pump operation in the situation with much water, the ultimate pressure comes up to higher pressure. Then the pump motion become dull by mechanical friction, the pump may cause damage. Change the pump oil by 「6.3 Oil change」.

**Table-3 Scheduled inspection**

Inspect cycle	Inspect Item	Inspect content	Action item
Every 3 days	Oil quantity Oil contamination	Specified oil level	Recharge oil
		Reddish brown or milky white→abnormal Black→not abnormal	Change oil
	Sound & Vibration	Unusual sound & Unusual vibration	Tighten bolts/nuts or Contact your local Representative
	Motor current	Specified rating	Confirm over current source or Contact your local Representative
Weekly	Surface temperature rising	>50°C UP →abnormal	Confirm over heat source or Contact your local Representative
	Oil leak	Oil leak from seals or plugs	Change seals, O-rings or Contact your local Representative
Every 3000 Hr or Every half year	Mesh filter, inlet port	Dust clogging	Clean the mesh filter
	Pump oil	Inspect oil certainly	Change oil
Every year	Coupling	Broken coupling	Change coupling

(2) Inspecting the pump oil quantity

Recharge the specified pump oil as oil level is always in the range (red circle marking) of oil gauge during operating.

(3) Inspecting the pump oil leakage

When happening the oil leakage from shaft seals or drain-plug seals, repair must be needed. As our service center provides the specified O-rings or seals, please contact your local ULVAC KIKO, Inc. service center.

(4) Inspecting the mesh filter in the inlet port

Any dust included in evacuated gases may cause clog the mesh filter and down pumping efficiency.

(5) Inspecting the abnormal noise or vibration

Check up any loose screws and nuts.

(6) Inspecting the coupling

Check the coupling which connects the main pump unit and motor of the pump for damage.

If cracks or fractures are found on the coupling, replace it in accordance with 「6.4 Replacement of the coupling」.

(7) Inspecting the oil mist trap

When applying the oil mist trap instead of the standard vacuum tubing, pay attention for clogging of the mesh filter of the oil mist trap. Heavy clogging may cause increasing inside pressure or bursting out the oil level gauge. Also, it may cause oil leakage from shaft seals or drain plug seals.

The maximum pressure inside this pump is 0.03 MPa (GAUGE).

Besides the inspecting items mentioned above, overhaul is useful when continuing the operation for long term or observing heavy contaminated oils.

Please contact your local ULVAC KIKO, Inc. Sales and Service Center.



**DANGER**

When requesting overhaul or repair the pump, inform the sort of evacuated gases on the "Check sheet for repair" attached at end of this manual, and submit the sheet by all means. When evacuating toxic gases, the pump body and the oil may cause toxic. We cannot overhaul or repair the pump evacuated some sort of toxic gases.

### 6.3 Oil change

Oil deterioration may cause the operating pressure rising. Confirm the specked ultimate pressure by plugging the pump inlet port. If observing the high ultimate pressure, change the pump oil. If mixing volatile contents (water, solvent) in the pump oil or precipitated sludge on the pump bottom, several times oil changing procedures should be necessary. The oil deterioration may be caused not only by oil contamination due to evacuated gases but also by oil performance change depending on long operating time. We recommend periodical oil change by the Table-3 "Scheduled Inspection".



## DANGER

When evacuating toxic gases, the pump body and the pump oil may cause toxic. Pay attention certainly.



## CAUTION

- Wear suitable protector (rubber gloves, goggles).
- Before charging the oil, read the 「1.2 Safety Data Sheet (SDS)」 . When the contaminated oil touched skin or came into eye accidentally, follow the first-aid-treatment of 「1.2 Safety Data Sheet」 .



## NOTE

Do not apply the different type of vacuum pump oil besides our recommended. If applying the different type of vacuum pump oil, it may cause the performance deterioration or shortening the lifetime of the pump.

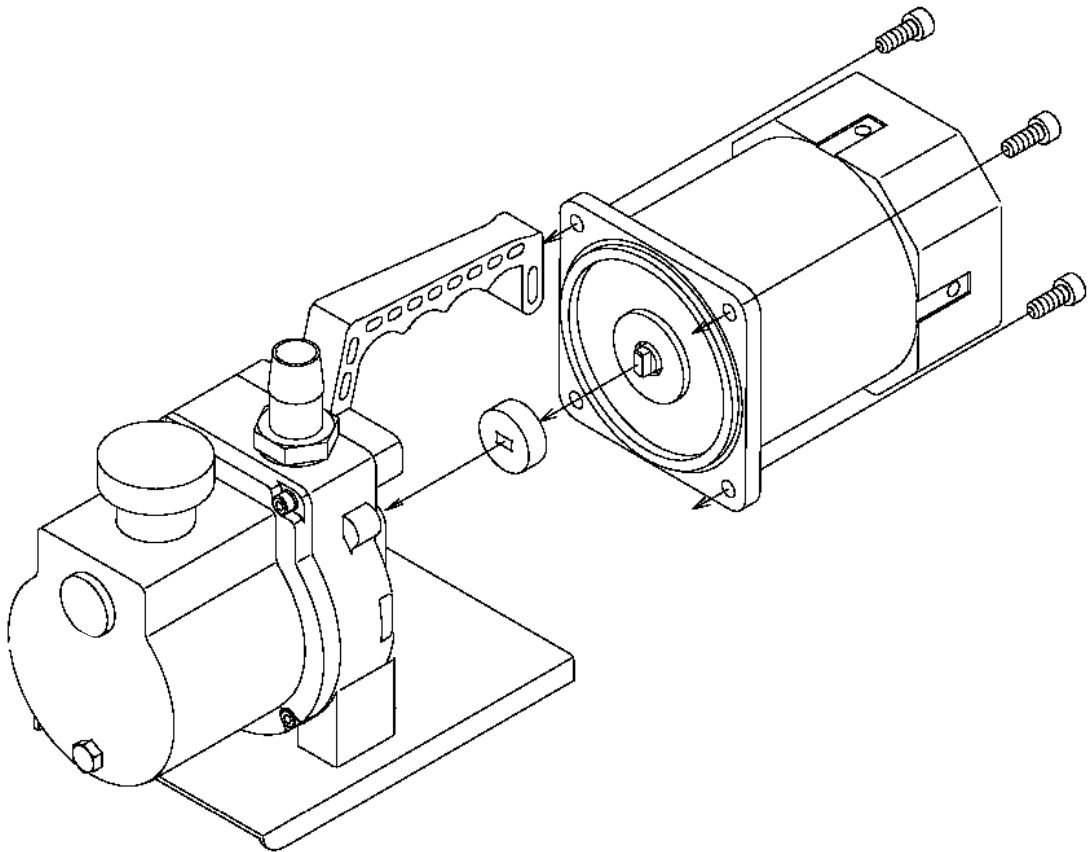
### [Oil Change Procedure]

- (1) Unplug the inlet port and operate the pump for 5 sec. We can discharge the remained oil inside the pump, effectively.
- (2) Disconnect the standard exhaust pipe, unplug the drain port, and then drain off the oil.
- (3) Plug the drain port; charge the recommended new oil as fixed quantity from the exhaust port. (Refer to Fig.3)
- (4) If the oil contamination is heavy, operating the pump for several minutes with the new pump oil will be necessary for cleaning the pump inside. Several cleaning procedures should be necessary for very heavy contamination.
- (5) After warming up the pump by operating with the new pump oil, confirm the ultimate pressure.
- (6) When depositing the oil sludge on the pump bottom as heavily contaminated oil, the specified ultimate pressure is difficult to obtain. Overhauling and repairing should be needed.

## 6.4 Replacement of the coupling

A coupling is used at the section connecting the pump main unit and the motor. It is recommended that this coupling be periodically inspected once a year or so. If the corner is chipped or cracked, replace it. If the pump is started and stopped hundreds of times a day, increase the inspection frequency.

To take out the coupling, it is necessary to remove the four bolts (which fix the motor to the casing.) and separate the motor from the pump. Check the coupling carefully from any troubles. After coupling inspection, re-attachment should attach coupling so that the coupling be fitted for the rotor shaft (pump side). To assemble the motor into the pump, it is required that the direction of the motor shaft should be suited to the coupling (as shown by fig.8).



**Fig-8 Replacement of the coupling**

Connect the concave section (female) of the pump unit with the convex section (male) of the motor, push the motor into the pump so that both connecting surfaces come completely into contact with each other, and fix the motor with bolts.

## 6.5 Trouble shooting list

Table-4 Trouble shooting list

Trouble	Cause	Procedure	Note
No rotating pump	①No connecting power	①Connect power cord	3.4
	②Power switch off	②Turn on power switch	4.2
	③Abnormal input voltage	Adjust input voltage within $\pm 10\%$	3.5
	④Overload relay operated	③Reset button switch	4.5
	⑤Inferior motor	④Replace motor	4.4
	⑥High oil viscosity at low temperature	⑤Warm atmosphere above $+7^{\circ}\text{C}$	4.4
	⑦Sticking the rotor by coming different objects into the pump	⑥Overhaul and repair (change cylinder or rotor)	6.2
	⑧Generating rust inside the pump by evacuating water vapor or solvent	⑦Overhaul and repair (change cylinder or rotor)	6.2
	⑨After evacuating reactive gases, reacted materials deposited inside the pump	⑨Overhaul and repair (clean and eliminate any reacted materials inside the pump)	
	⑩Internal parts damaged	⑩Overhaul and repair (change the parts)	
Irregular rotation of the pump	①Abnormal input voltage	①Adjust input voltage within $\pm 10\%$	3.5
	②Inferior wire connection to the pump	②Connect wire again to the pump	3.4
	③High oil viscosity at low temperature	③Warm atmosphere above $+7^{\circ}\text{C}$	4.4
	④Coming different objects into the pump	④Eliminate different objects then overhaul and repair the pump	
No pressure reduction	①Low pumping capacity for vacuum vessel volume	①Re-select the pumping capacity	5.2
	②Vacuum pressure measuring is not correct	②Measure the vacuum pressure correctly	5.1
	③Inadequate applying vacuum gauge	③Apply the corrected vacuum gauge adapted to measuring pressure range	
	④Small diameter and long suction tubing	④Connect same diameter tubing with inlet port (suction) and short distance to the vacuum vessel	5.1
	⑤Clogged the different objects on the mesh filter inside the inlet port	⑤Disconnect the suction tubing, clean the mesh filter	6.2
	⑥Insufficient quantity of the oil	⑥Fill the oil up to the specified quantity	3.2
	⑦Oil deteriorated	⑦Change the oil	6.3

Trouble	Cause	Procedure	Note
	⑧Leakage from the tube connection with the pump ⑨Applying no specified oil ⑩No circulating oil. Clogging the oil aperture of the pump cover	⑧Detect leakage by the leak detector, and stop leakage ⑨Charge specified oil after overhauling or repairing ⑩Overhauling and repairing, clean the oil aperture	6.3
Unusual sound	①Abnormal input voltage ②Inferior motor ③Coming different objects into the pump ④Insufficient quantity of the oil ⑤The coupling malfunctions. ⑥No circulating oil. Clogging oil aperture of the pump cover ⑦Internal parts damaged	①Adjust input voltage within $\pm 10\%$ ②Replace motor ③Eliminate different objects then overhaul and repair the pump ④Fill the oil up to the specified quantity ⑤Replace the coupling ⑥Overhauling and repairing, clean the oil aperture ⑦Overhauling and repairing (Replace parts)	3.5       3.2 6.4
Abnormal high temperature on the pump surface R. T > +50 °C	①Continuous operating at high suction pressure ②Insufficient quantity of the oil (Oil shortage, low cooling effect) ③High temperature evacuating gases ④No circulating oil. Clogging the oil aperture of the pump cover	①Temperature of the pump surface will be 80°C during continuous operation, but no problem happened ②Fill the oil up to the specified quantity ③Set the gas cooling unit on suction side ④Overhauling and repairing, clean the pump aperture	3.2
Oil spouting from exhaust port	①Too sufficient oil quantity for the specified level ②Continuous operating at high suction pressure	①Drain the oil to the specified level ②Set oil mist-trap on exhaust side	3.2 4.6
Oil leak out of the pump	①O-rings or oil seals of the case or the cover	①Inspect and replace o-ring or oil seals	6.2

## 7. Product disposal

When disposing the pump, check and dispose the pump in accordance with laws and regulations by the local administration.



### **CAUTION**

When evacuating toxic gases which present hazardous situations to the human body entrust the pump should be disposed with authorized professional specialist.

## 8. Maintenance parts

### 8.1 Maintenance parts list

Table-5 G-5DA Maintenance parts list

Product name	No.	Parts name	Q'ty
G-5DA Maintenance kit	8	Vane	4
	9	Vane spring	2
	10	Outlet valve	2
	19	Coupling	1
	21	Oil level gauge	1
	27	Oil seal_HTC-9-22-7	1
	28	Oil seal_VC-10-20-4	1
	29	O-ring _S-9	1
	30	O-ring _P-6	1
	31	O-ring _P-18	1
	32	O-ring _S-101.1	1

Table-6 G-10DA Maintenance parts list

Product name	No.	Parts name	Q'ty
G-10DA Maintenance kit	8	1st Vane	2
	9	2nd Vane	2
	10	Vane spring	3
	11	Outlet valve	2
	20	Coupling	1
	22	Oil level gauge	1
	32	Oil seal_HTC-9-22-7	1
	33	Oil seal_VC-10-20-4	1
	34	O-ring _S-9	1
	35	O-ring _P-6	1
	36	O-ring _P-18	1
	37	O-ring _S-101.1	1

Note : For the relationship between components, see the disassembly drawing.

## 8.2 Disassembly drawing

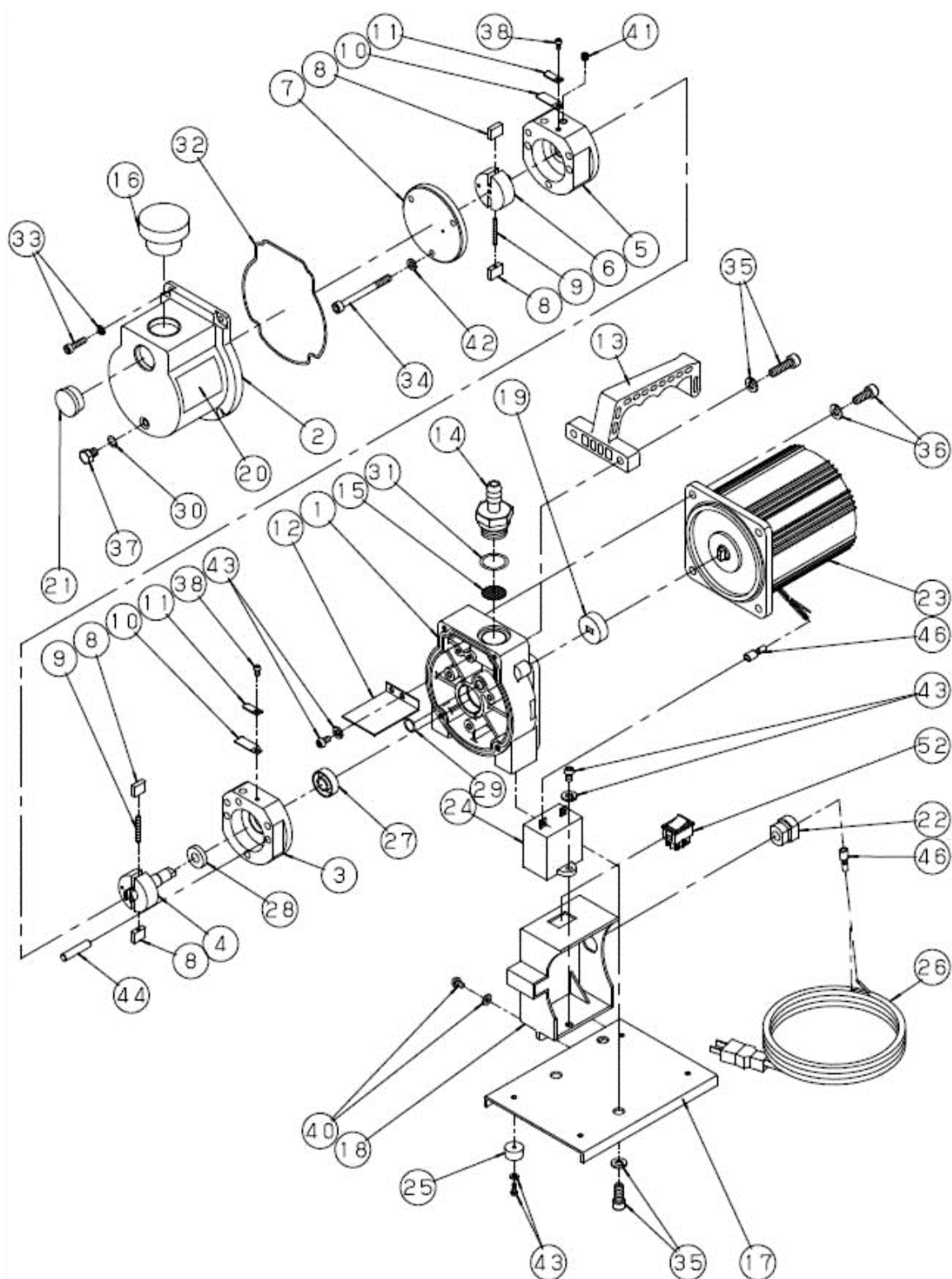


Fig-9 Disassembly drawing of G-5DA

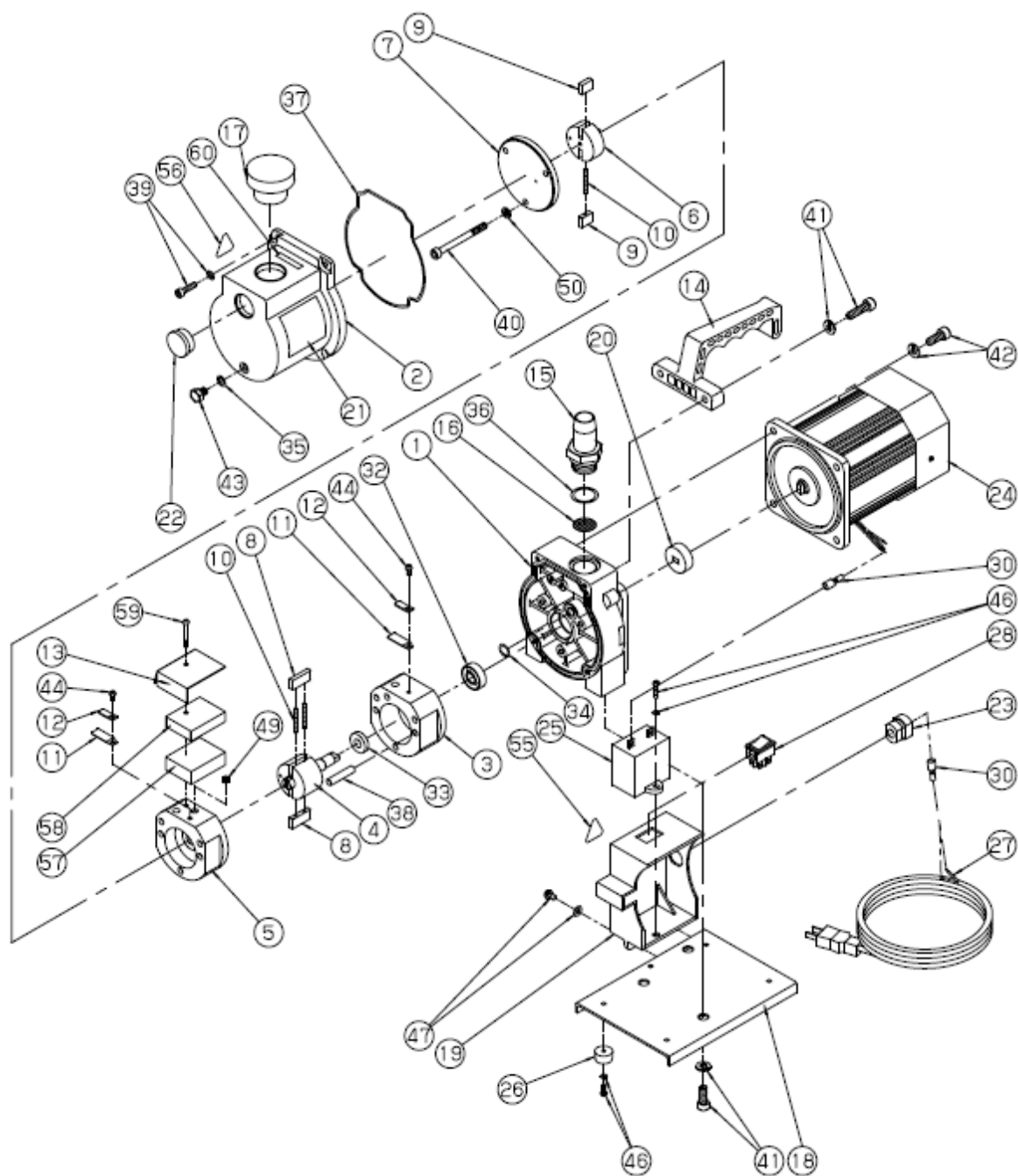


Fig-10 Disassembly drawing of G-10DA

## **Warranty**

(1) The warranty for this pump (this equipment) extends for a period of one year from the date of shipment.

(2) Any malfunctions or defects which occur under normal usage conditions during the warranty period will be repaired free of charge.

Note, the warranty stated here is an individual warranty covering the pump. In addition, the scope of the warranty coverage concerning repairs is limited to the repair and/or replacement of parts.

Normal usage conditions refer to the following:

- a) Ambient temperature and humidity during operation: 7 - 40°C, below 85% RH
- b) Operation in accordance with the user manual

(3) Repair fees will incur during the warranty period for the following cases:

- a) Malfunctions due to a natural disaster or fire.
- b) Malfunctions caused by special atmospheric conditions, such as salt damage, inflammable gas, corrosive gas, radiation or pollution.
- c) Malfunctions caused by usage conditions that differ from those stated in the user manual (performance specifications, maintenance and inspection, etc.).
- d) Malfunctions caused by modifications or repairs carried out by a party other than the manufacturer, or by a service company not approved by the manufacturer.
- e) Malfunctions caused by noise (electric disturbance).
- f) Malfunctions that occur when not using a rated power supply.
- g) Malfunctions that occur when there is an abnormal rise in internal pressure due to the pump exhaust outlet being blocked during operation, etc.
- h) Malfunctions that occur, when the pump is damaged as a result of being dropped or falling, etc.
- i) Malfunctions which are determined by the manufacturer's technical personnel to be caused by conditions that do not comply with the usage conditions for this vacuum pump.
- j) Malfunctions due to the replacement of consumables.

(4) Disclaimer

- a) We shall not be liable for any malfunctions of our products caused by the customer, regardless if the malfunction does not fall within the warranty period, nor shall we be liable for any loss of opportunity for the customer's clients or for compensation for any damages to other products, labor costs, production loss, transportation expenses and other related work.
- b) We shall not be liable for any claims and patent infringements, including secondary damages, filed a claim by a third party against the customer.

## Usage Status Check Sheet (for use in Instruction Manual)

\* For the purpose of safety control of repair personnel, fill in within the heavy line frame and attach the sheet to the item of which repair is requested.

\* In case this sheet were not attached or filled in, your request of repair and service may not be accepted.

\* In accordance with the Private Information Protection Law, the provided information will be used only for determining the cause of failure and whether detoxifying washing should be conducted. It will never be provided to any third person.

Model Name: \_\_\_\_\_ Manufacturer's Serial No.: \_\_\_\_\_

1. Inhaled Gas \* Please be sure to fill in.

(1) Whether there is harmful effect on human bodies Yes No (Sing your name below.)

(2) Whether there is unusual smell Yes No

(3) Type and Name of Gas: \_\_\_\_\_

\* Industrial Safety and Health Law designates particular substances as the materials to be notified.

### 2. Usage Status

Operation Method: Approx. ( ) hours per day, ( ) years and ( ) months

☐ Continuous Operation ☐ Intermittent Operation

Usage: \_\_\_\_\_

3. Failure Status ☐ Unusual Noise ☐ Abnormal Pressure ☐ Abnormal Actuation  
☐ Oil Leakage ☐ Other

Symptoms: \_\_\_\_\_

4. Detail of Request ☐ Repair (Overhaul) ☐ Regular Checks

5. Others: \_\_\_\_\_

Company Name: \_\_\_\_\_ Personnel in charge: \_\_\_\_\_

Address: \_\_\_\_\_

Tel: \_\_\_\_\_ Fax: \_\_\_\_\_ E-mail: \_\_\_\_\_

Agent Name: \_\_\_\_\_ Personnel in charge: \_\_\_\_\_

Address: \_\_\_\_\_

Tel: \_\_\_\_\_ Fax: \_\_\_\_\_

\* In case you do not have any direct transaction with us, please be sure to fill in the agent name.

### 6. Confirmation

The gas and substance used in this pump or unit is harmless to human bodies, or it is not contaminated by any substance harmful to human bodies.

Signed \_\_\_\_\_ (seal) Date: \_\_\_\_\_

\* In order to avoid a trouble during transportation, please evacuate oil from any oil pump before shipping.

\* You are requested to ship the package to our Service Division (CS Center). (See the attached list of addresses.)